













Quality Seal

0197

UL US IN ACCORDANCE WITH

MADE IN G

CO₂



SONY
POWER SUPPLY
INPUT: 100-240V AC, 50/60Hz
OUTPUT: 12V DC, 1.5A
MAXIMUM POWER: 18W
MODEL: PS-1215
MADE IN CHINA

UL
CE
FUSE: 5A 250V
RECYCLING SYMBOLS









































DE FAMILIARES LIMPIAS

Coviv-KH PROMESSA L Contenedor de Risa EPP

BX 23 FMS











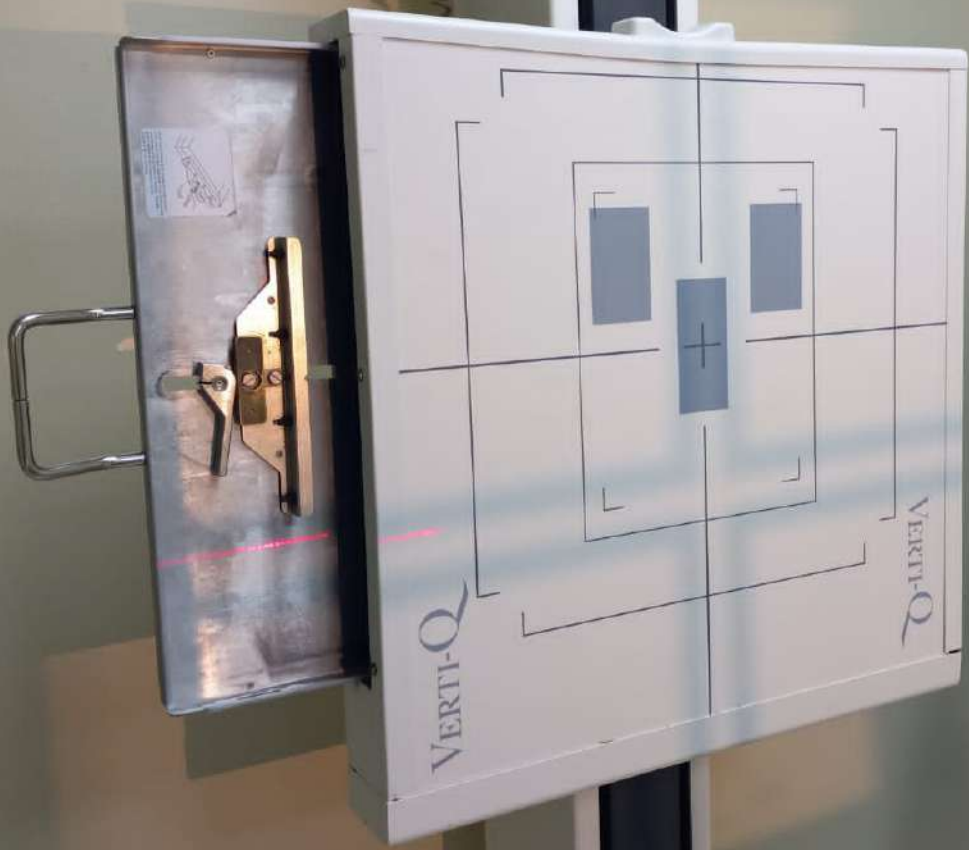










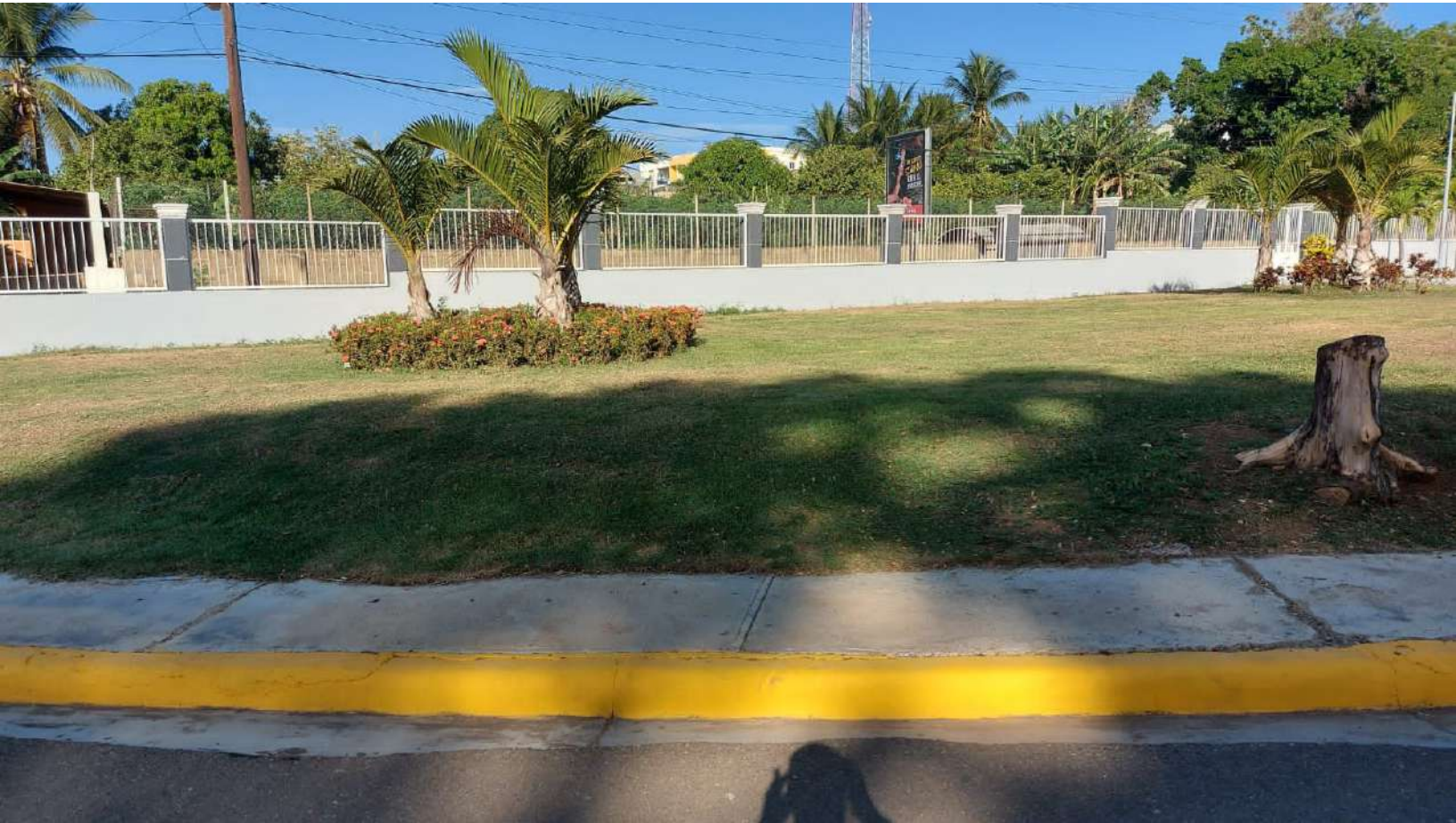








































M B
11/11
ME/CA
11/11

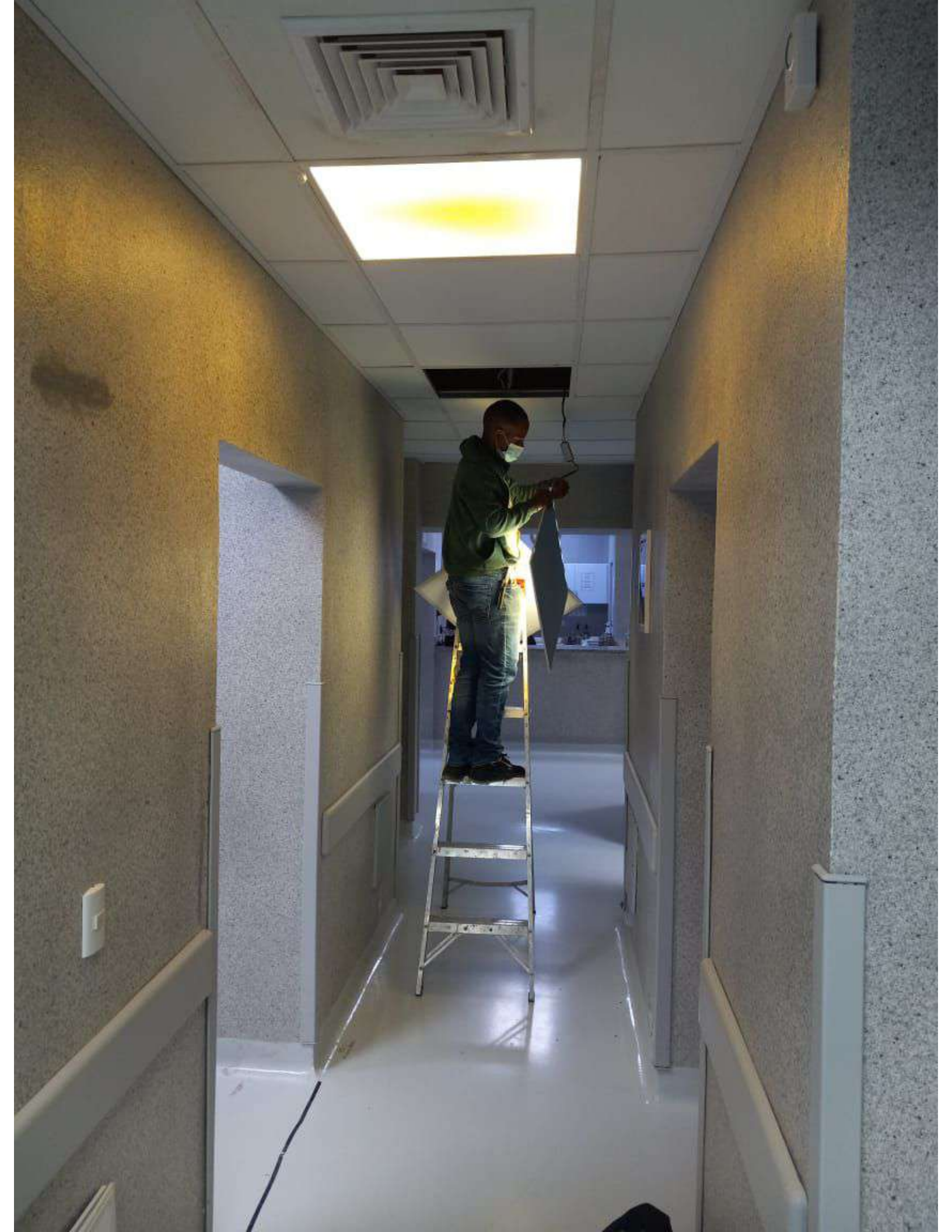


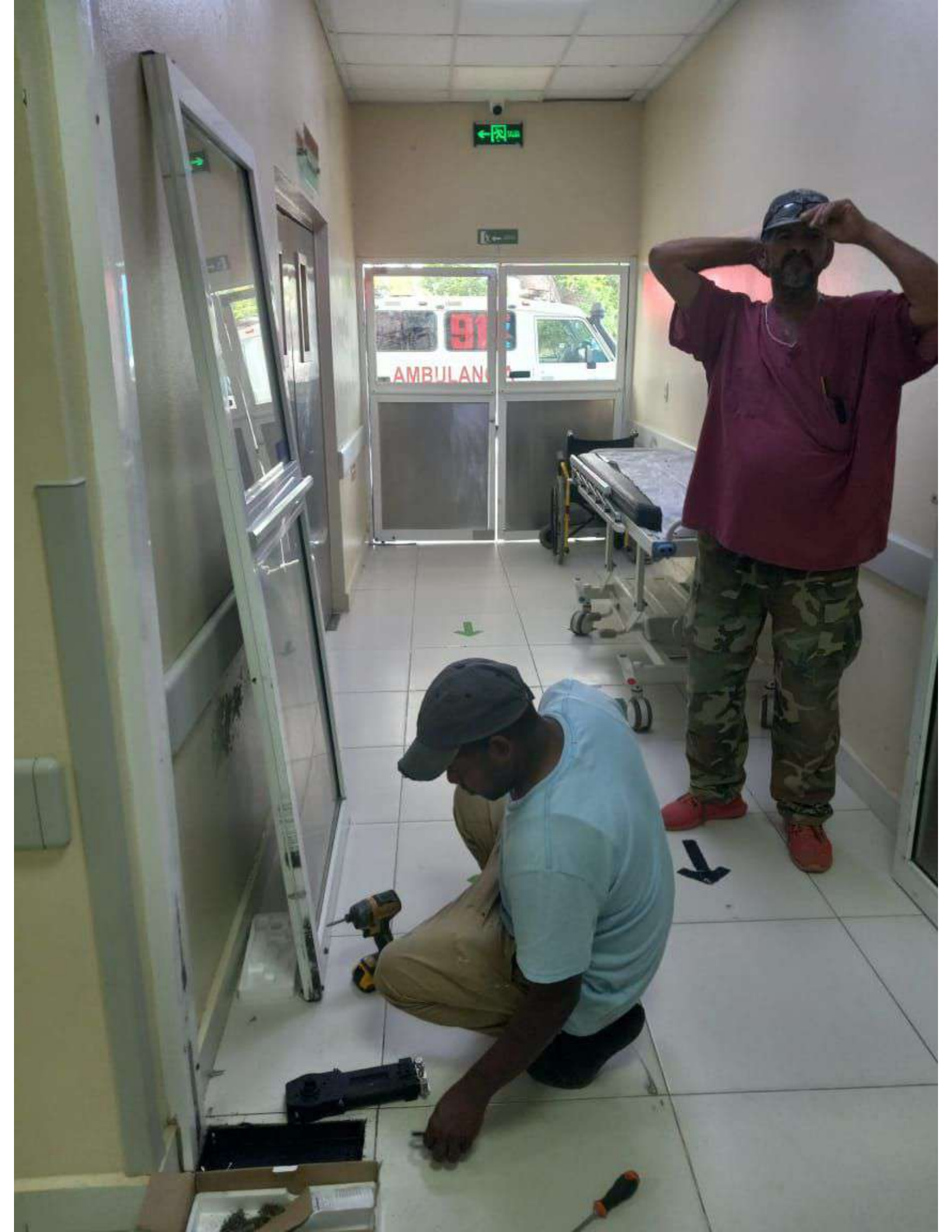




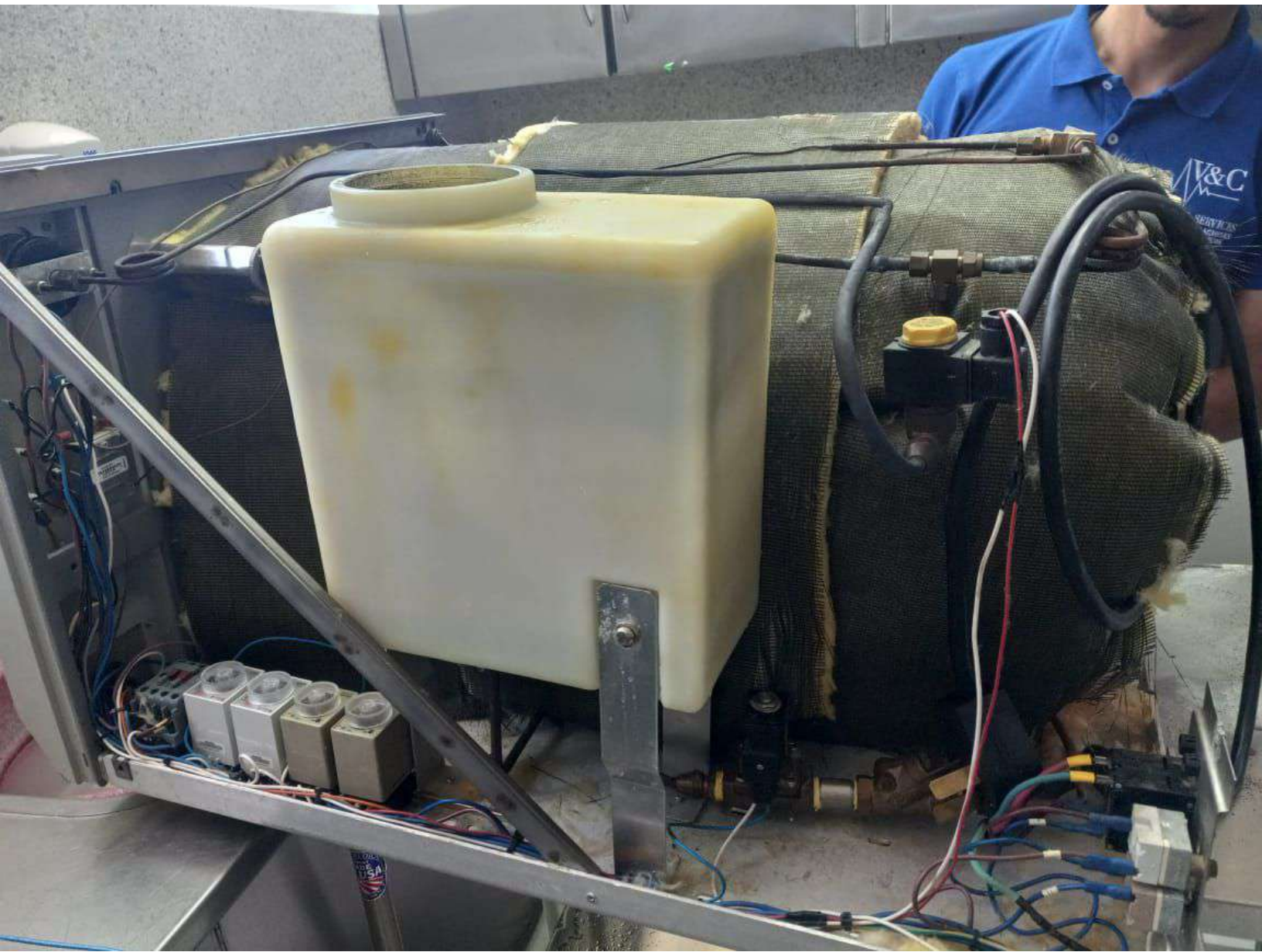
















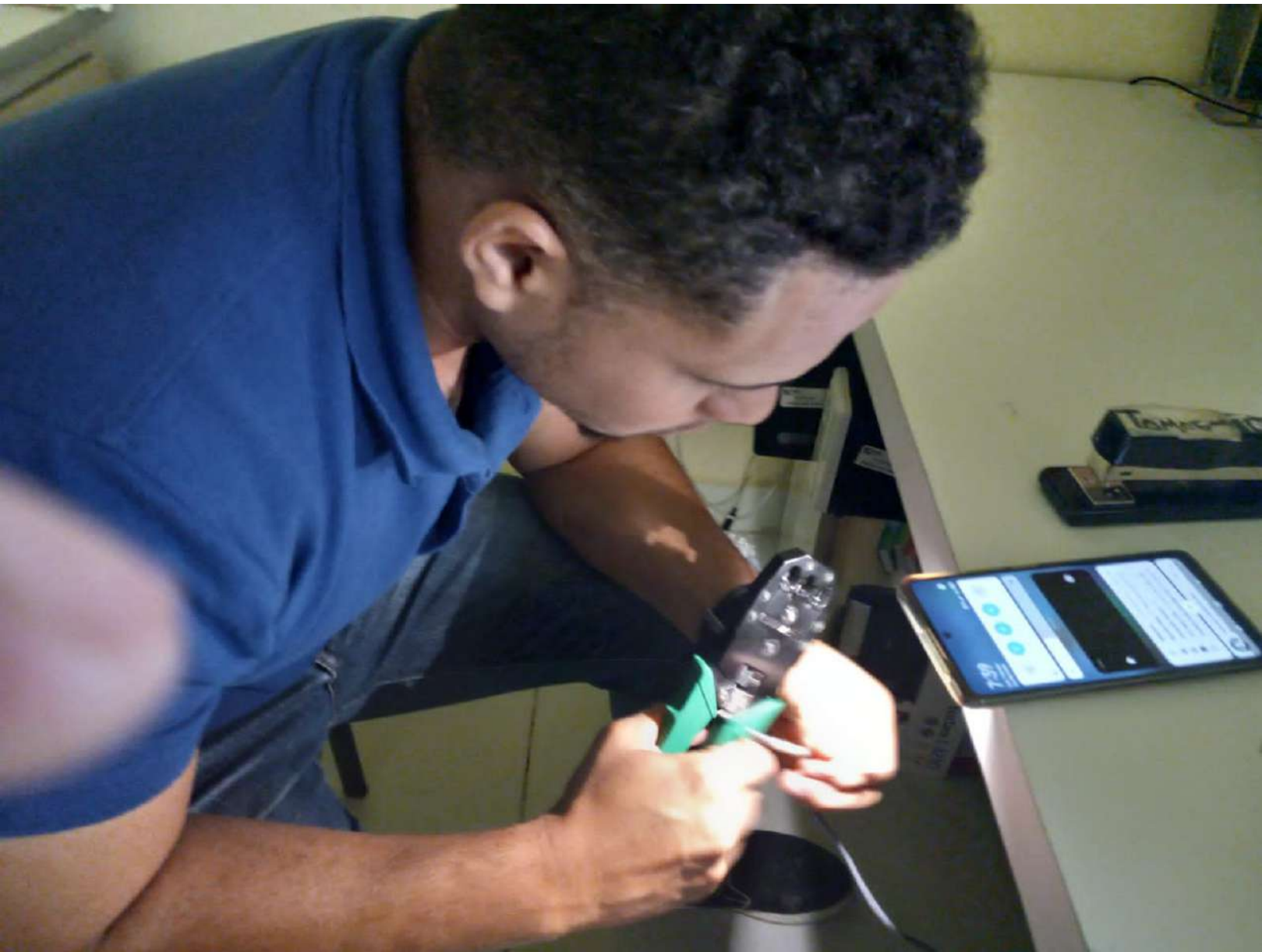










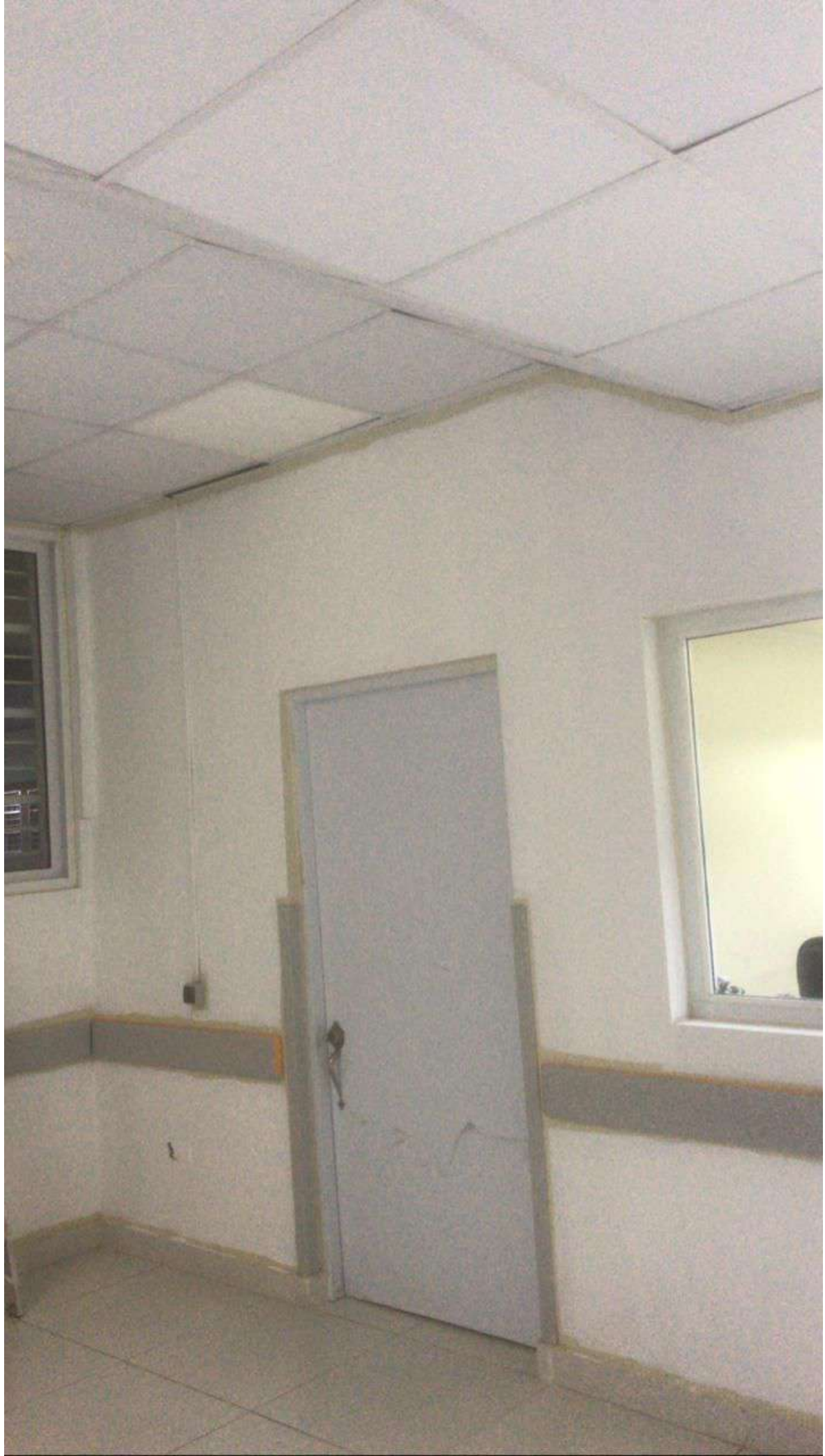














 **FACTURACIÓN**























Tomografia























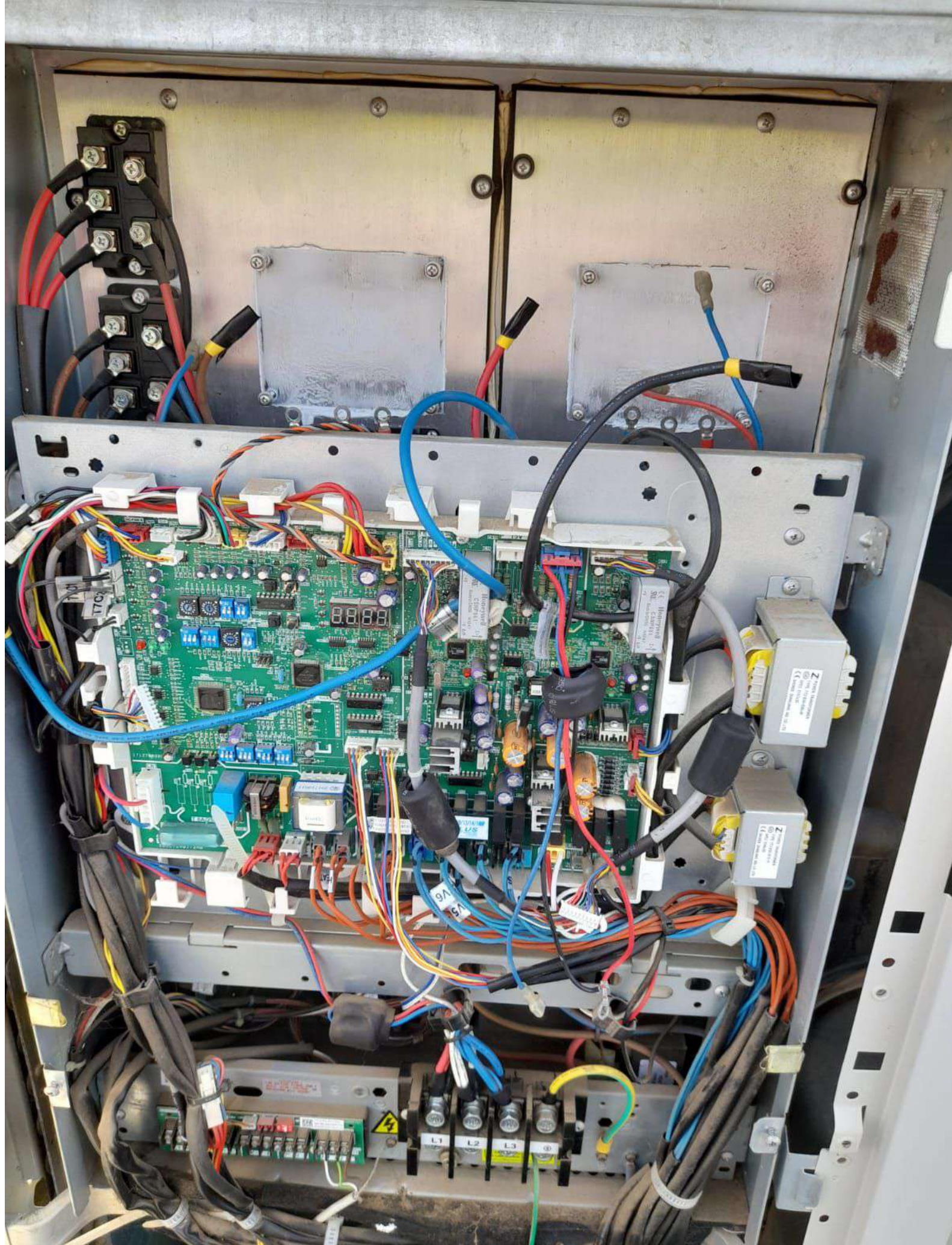






HIDRATAC
OBSE





Terminal block with multiple screw terminals connected to red and black wires.

Large metal heat sink mounted on the top of the chassis.

Large metal heat sink mounted on the top of the chassis.

Main green PCBs containing various electronic components, including integrated circuits, capacitors, and a small digital display.

Grey power supply unit with a label.

Grey power supply unit with a label.

Terminal block with several green and red connectors.

Connectors labeled L1, L2, L3, and L4.

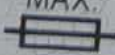









DC INVERTER V4 PLUS-S SERIES
AIR CONDITIONER OUTDOOR UNIT

MODEL	MDV-400(14)W/D2DN1(B)	
COOLING CAPACITY	40kW	
HEATING CAPACITY	45kW	
POWER SOURCE	220V 3~ 60Hz	
RATED CURRENT	MAX. 	54.4A/60A
NET WEIGHT	285kg	
REFRIGERANT	R410A / 13000g	
PS	HIGH	4.4MPa
	LOW	2.6MPa
OUTDOOR RESISTANCE CLASS		IP 24
		





HITACHI

INVERTER REFRIGERATING COMPRESSOR

变频涡旋压缩机

MODEL
型号

E655DHD-65A2YG

REFRIGERANT
制冷剂

R410A

POWER SOURCE
电源

=== 65-200 V
40-200 Hz

INPUT
输入功率

9000 W

DATE
日期

170522 C

OIL CHARGE
充油量

0.5 L

MFG. NO.
序号

H145914

Johnson Controls-Hitachi Wanbao Compressor (Guangzhou) Co., Ltd.
江森自控日立万宝压缩机（广州）有限公司



MADE IN CHINA

(01)0693476960E6G2(10)170522C(21)H145914



警告

防止触电！
在维修前请关闭电源，并请切实接好地线，以防触电。



WARNING

Turn power OFF before servicing.
Use this compressor on a grounded system only.



禁止

禁止充入！



AND-NOT

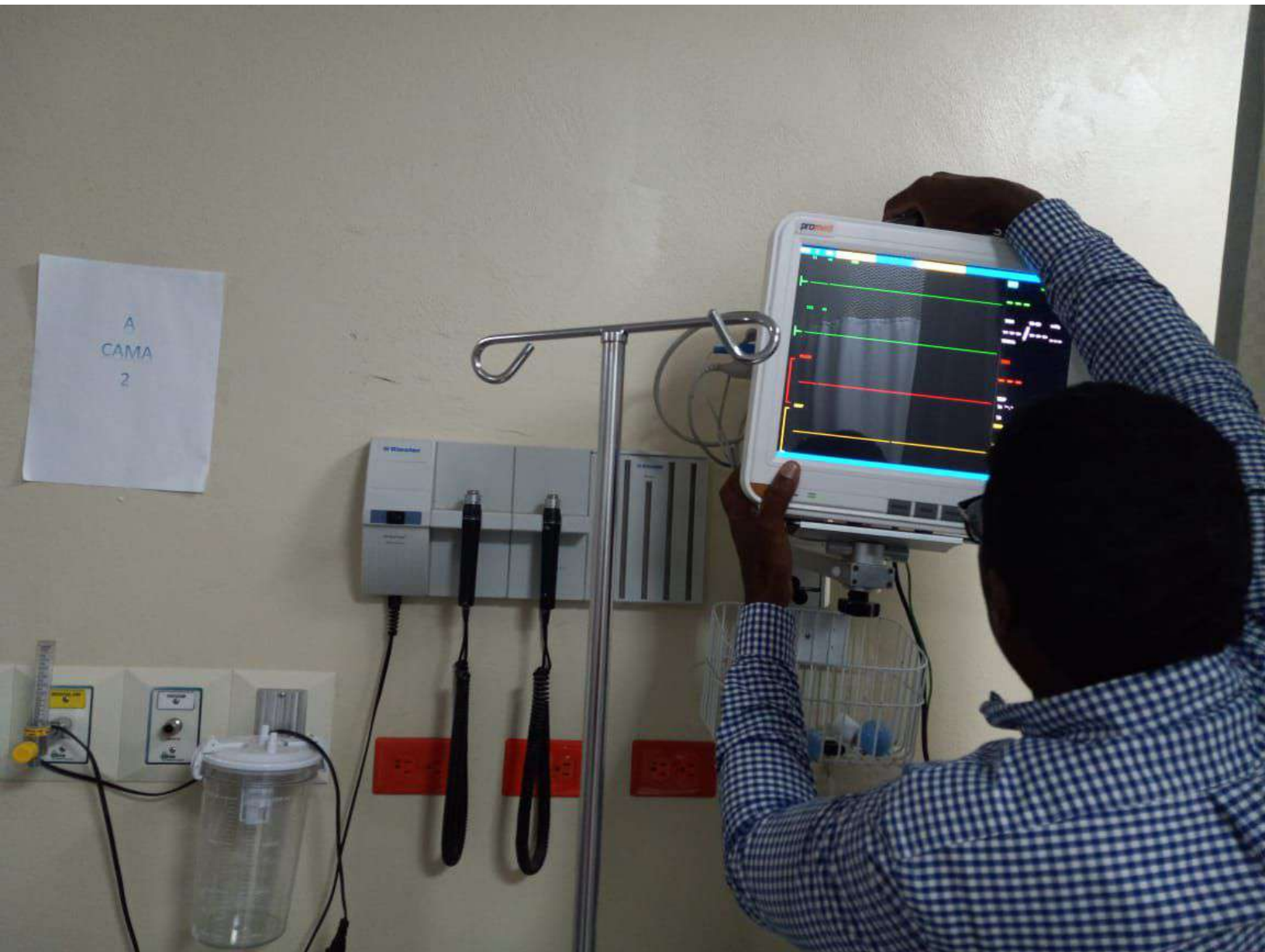
勿将易燃易爆气体充入压缩机内。
DO NOT put flammable or explosive gas into the compressor.

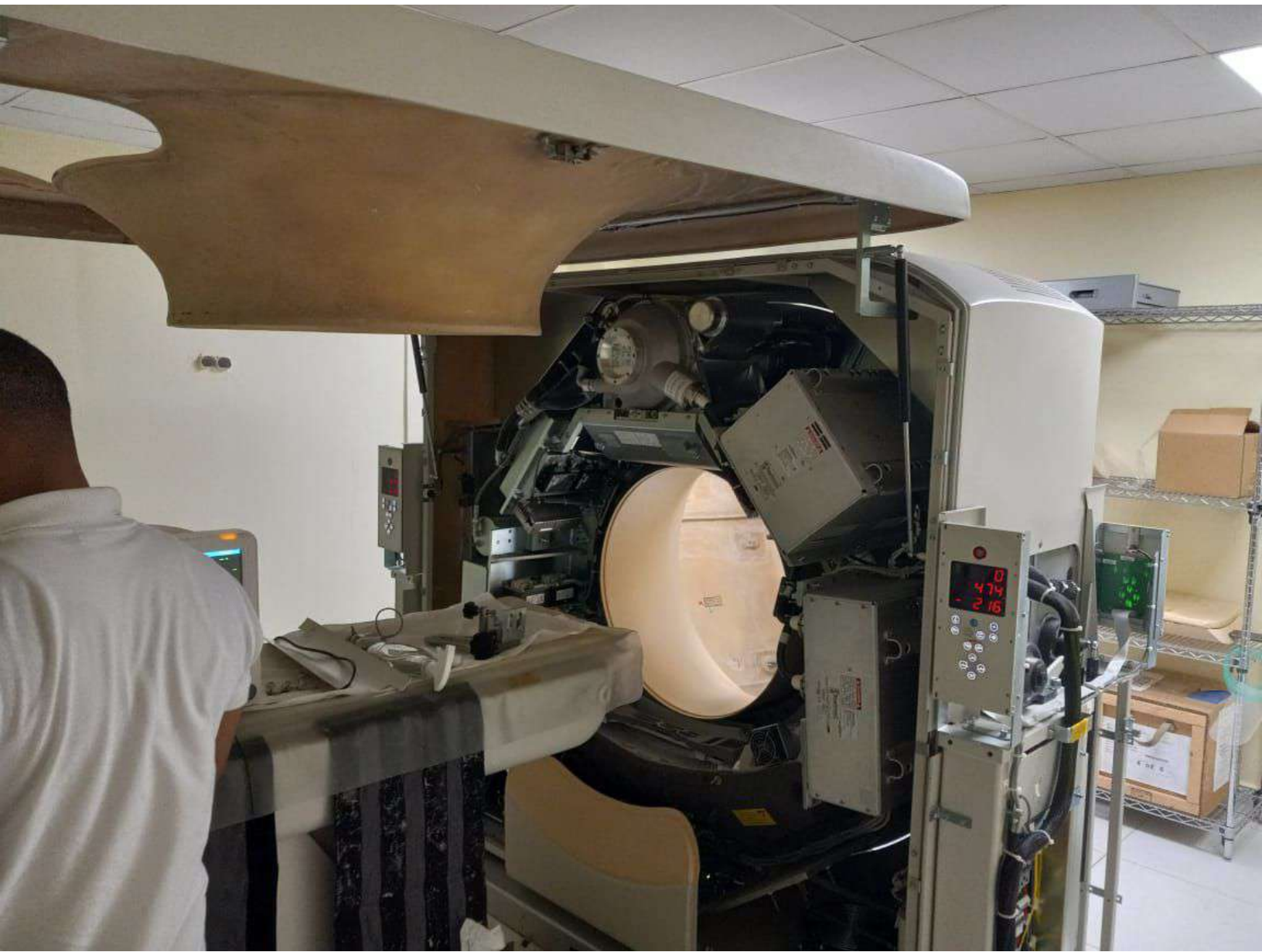












B
CAMA
1





UCI INTERMEDIO

EXTINTOR



DIFFLATOR

ACTUAL PRESSURE **ACTUAL FLOW**

0 mm Hg **3** $\frac{1}{\text{min}}$

Veress en funcionamiento

15 mm Hg	Bottle Gas <input type="checkbox"/>	2.7 l	3 $\frac{1}{\text{min}}$
-----------------	-------------------------------------	--------------	---------------------------------

PRESET PRESSURE VOLUME PRESET FLOW

▲ MENU RESET ▼ ▲

WHITE BALANCE ENHANCE

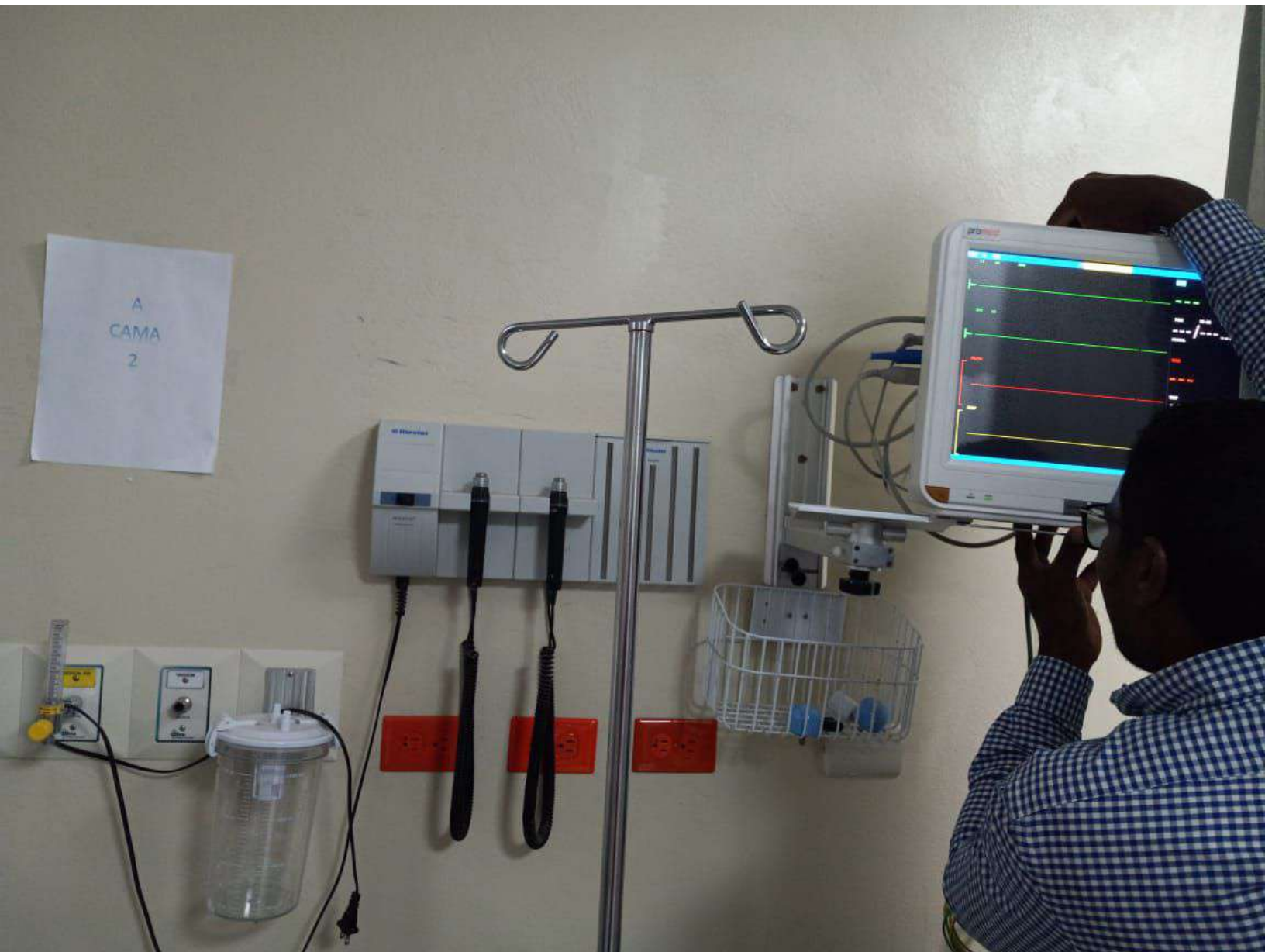
SCOPY

ER BATTERY LIGHT CABLE

POWER BRIGHTNESS









40L HIGHFLOW INSUFFLATOR

ACTUAL PRESSURE

ACTUAL FLOW

START
STOP

0 mm Hg 3 $\frac{l}{min}$

Veress en funcionamiento

15 mm Hg Bottle Gas 4.0 l 3 $\frac{l}{min}$

PRESET PRESSURE VOLUME PRESET FLOW

WHITE BALANCE GAIN ENHANCE

STERISAD

COPY

STANDBY

SHUTTER

LIGHT CABLE

X6000

Universal

BULB HOURS

BRIGHTNESS

OPERATING INSTRUCTIONS

1. Turn on the power switch.

2. Set the pressure and flow rate.

3. Connect the patient to the insufflator.

4. Start the insufflation.

5. Monitor the patient's vital signs.

6. Stop the insufflation when the procedure is complete.

7. Turn off the power switch.

STERIS





40L HIGHFLOW RESPIFLATOR ACTUAL PRESSURE ACTUAL FLOW

stryker
ENDOSCOPY
Controlar alimentación de gas

START/STOP

PRESET PRESSURE MENU RESET VOLUME PRESET FLOW

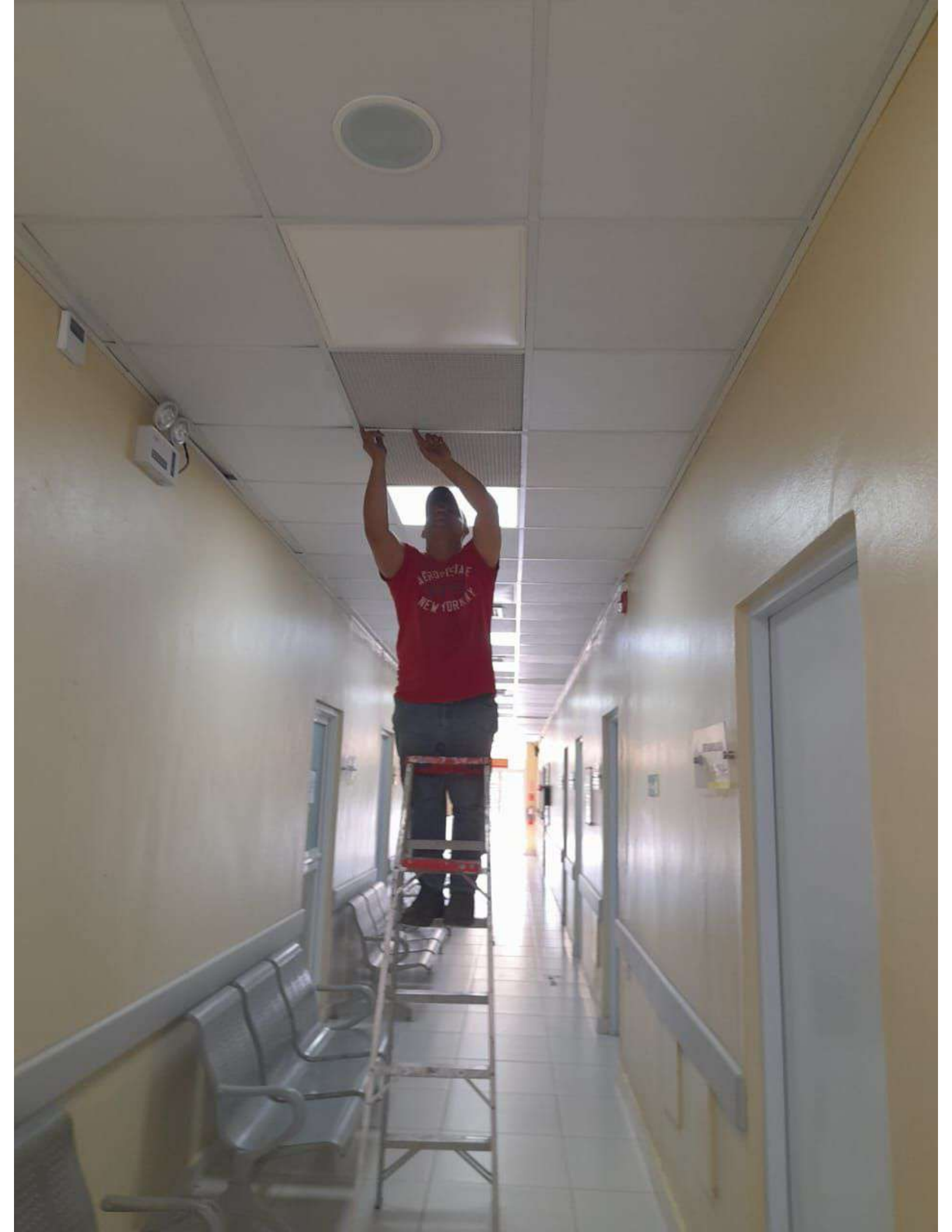
WAKE BALANCE GAIN SLEEP/STOP

POWER

STRYKER
40L HIGHFLOW RESPIFLATOR
40L HIGHFLOW RESPIFLATOR
40L HIGHFLOW RESPIFLATOR

BIOMEDICAL
EQUIPMENT
CORPORATION
COLUMBIA, SC











































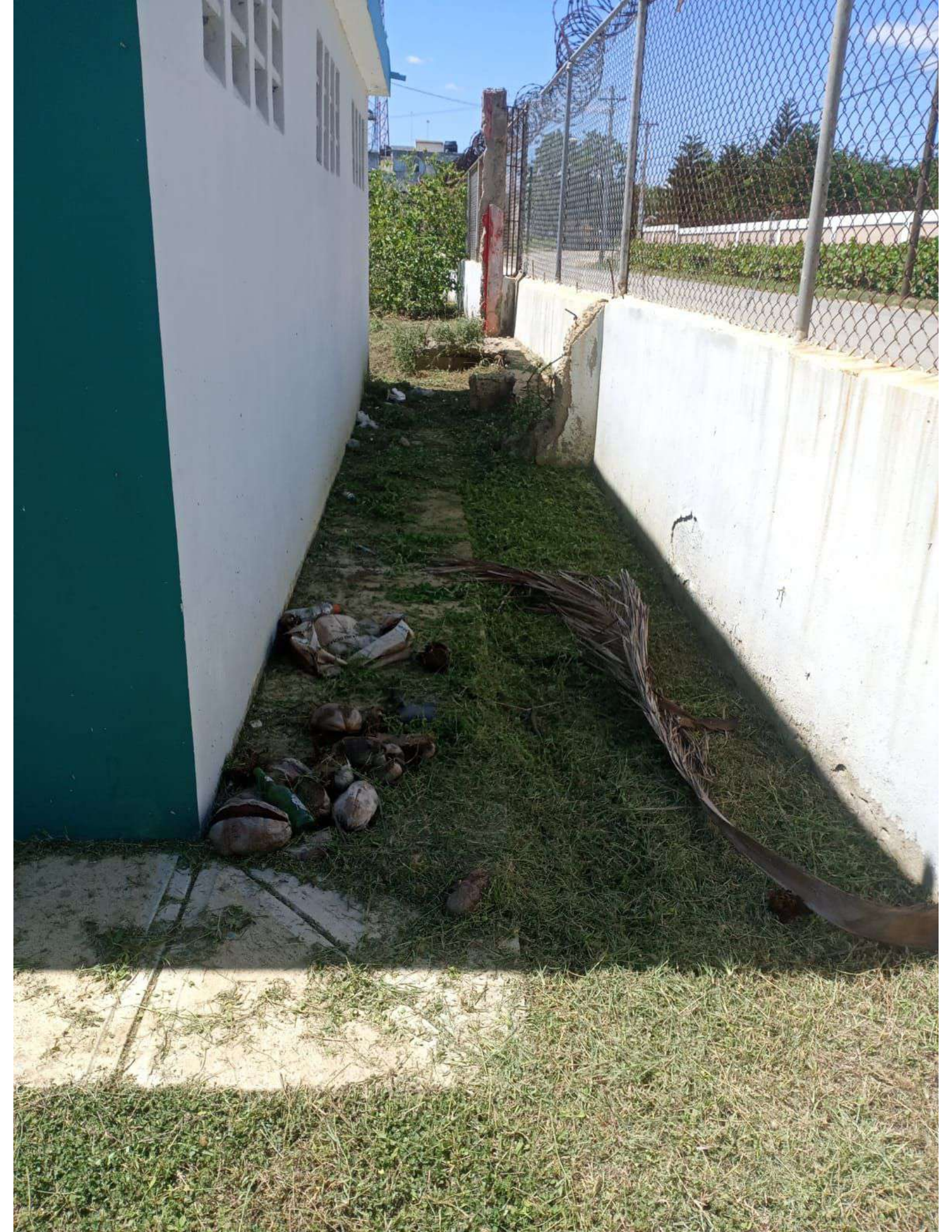
































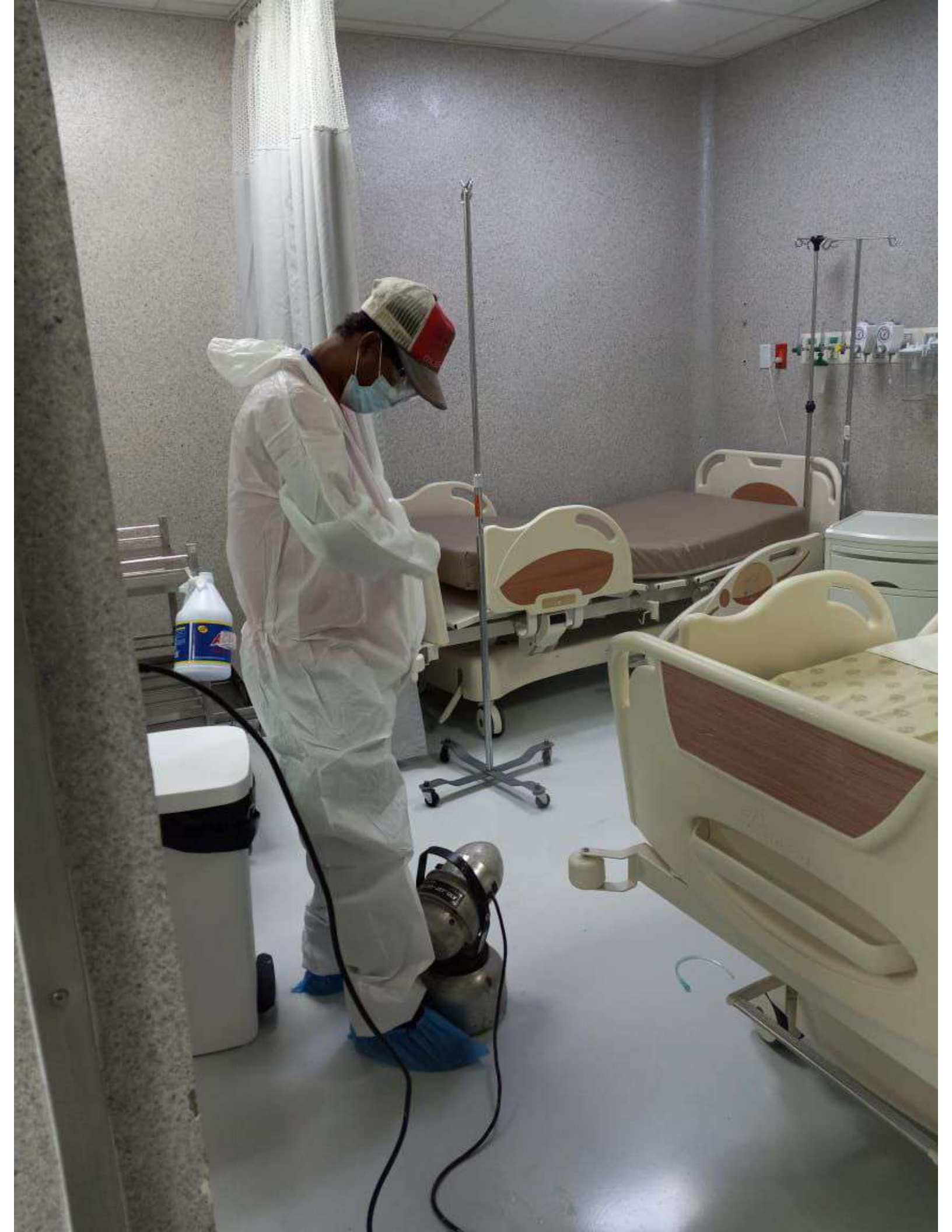








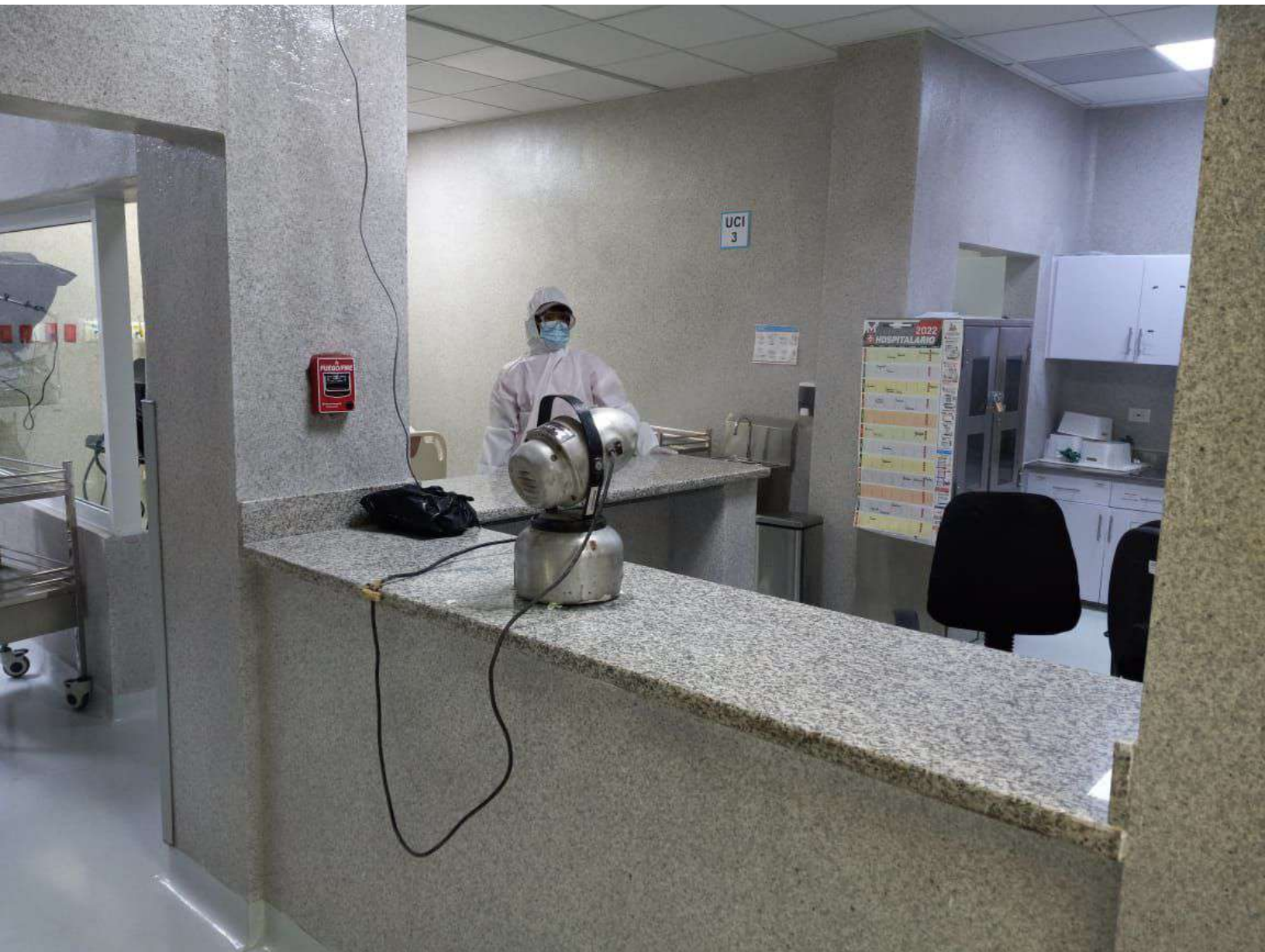




















DIFFLATOR

ACTUAL PRESSURE **ACTUAL FLOW**

0 mm Hg **3** $\frac{1}{\text{min}}$

Veress en funcionamiento

15 mm Hg	Bottle Gas <input type="checkbox"/>	2.7 l	3 $\frac{1}{\text{min}}$
-----------------	-------------------------------------	--------------	---------------------------------

PRESET PRESSURE VOLUME PRESET FLOW

WHITE BALANCE ENHANCE

SCOPE LIGHT CABLE

SCOPE

ER

BLUE

Technical specifications and safety information for the Veress flowmeter.







40L HIGHFLOW RESPIRATOR

ACTUAL PRESSURE

ACTUAL FLOW

stryker
ENDOSCOPY
Controlar alimentación de gas

START/STOP

PRESET PRESSURE
MENU
RESET
VOLUME
PRESET FLOW

WHITE BALANCE
GAIN
EMERGENCY CD

POWER

STRYKER
40L HIGHFLOW RESPIRATOR
OPERATION MANUAL

BIOPAC
MP150
ANALOG

BIOPAC
MP150
ANALOG



40L HIGHFLOW INSUFFLATOR

ACTUAL PRESSURE

ACTUAL FLOW

START
STOP

0 mm Hg

3 $\frac{l}{min}$

Veress en funcionamiento

15 mm Hg

Bottle Gas

4.0 l

3 $\frac{l}{min}$

PRESET PRESSURE

VOLUME

PRESET FLOW

▼

▲

MENU

RESET

▼

▲

WHITE BALANCE

GAIN

ENHANCE

☒

☀

▲

⏻

STREETS

COPY

STANDBY

SHUTTER

LIGHT CABLE

BUILD HOUR

BRIGHTNESS

STREETS
X6000
COPY

























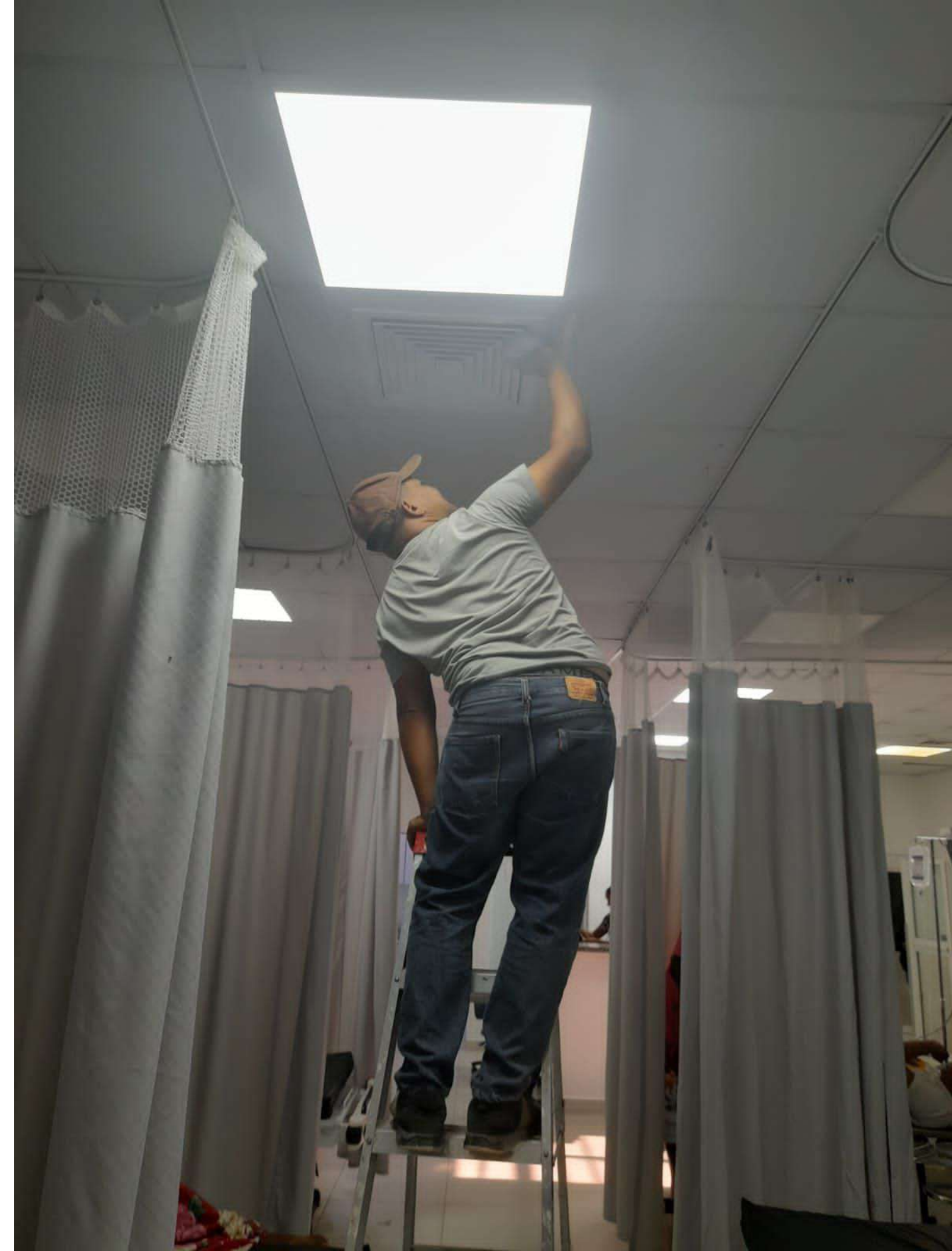


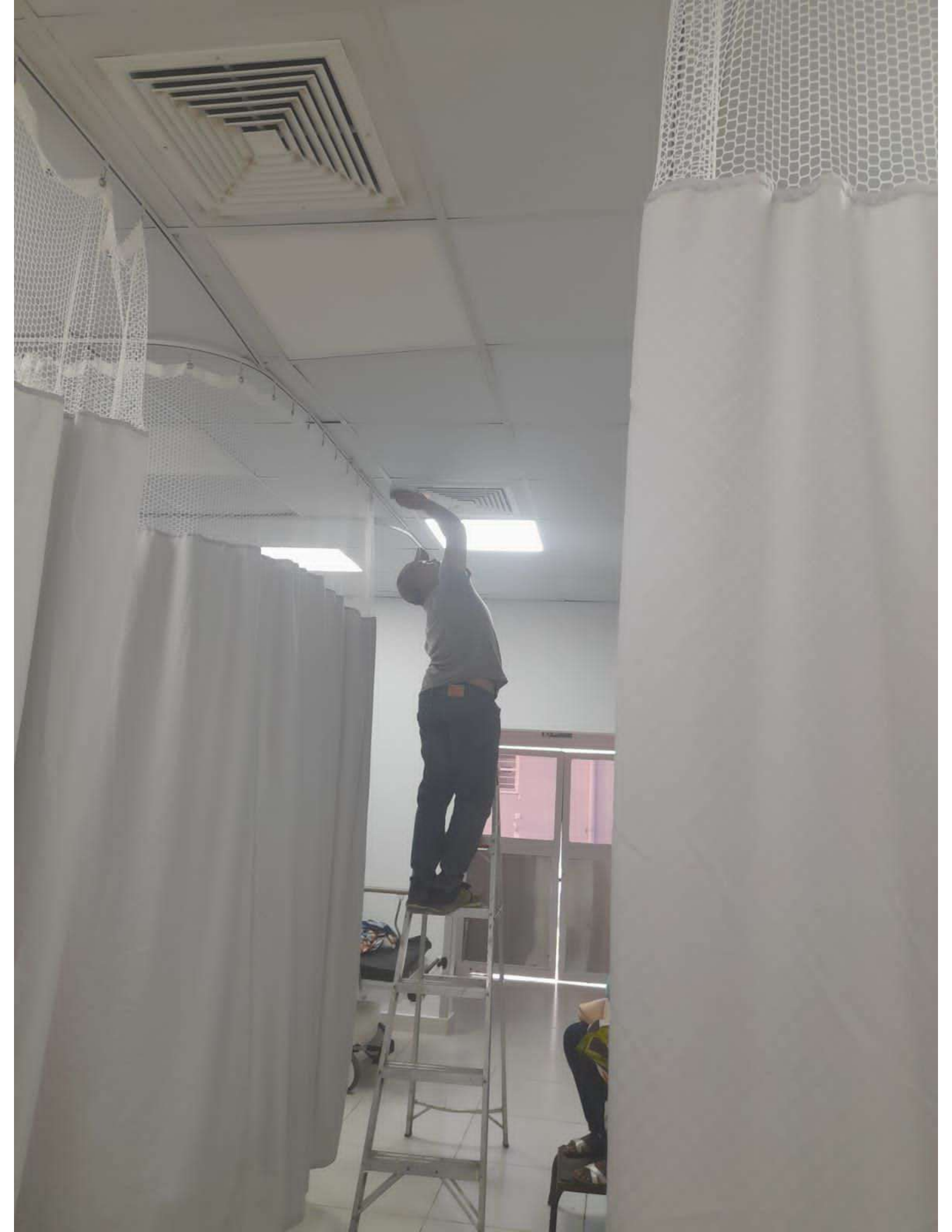




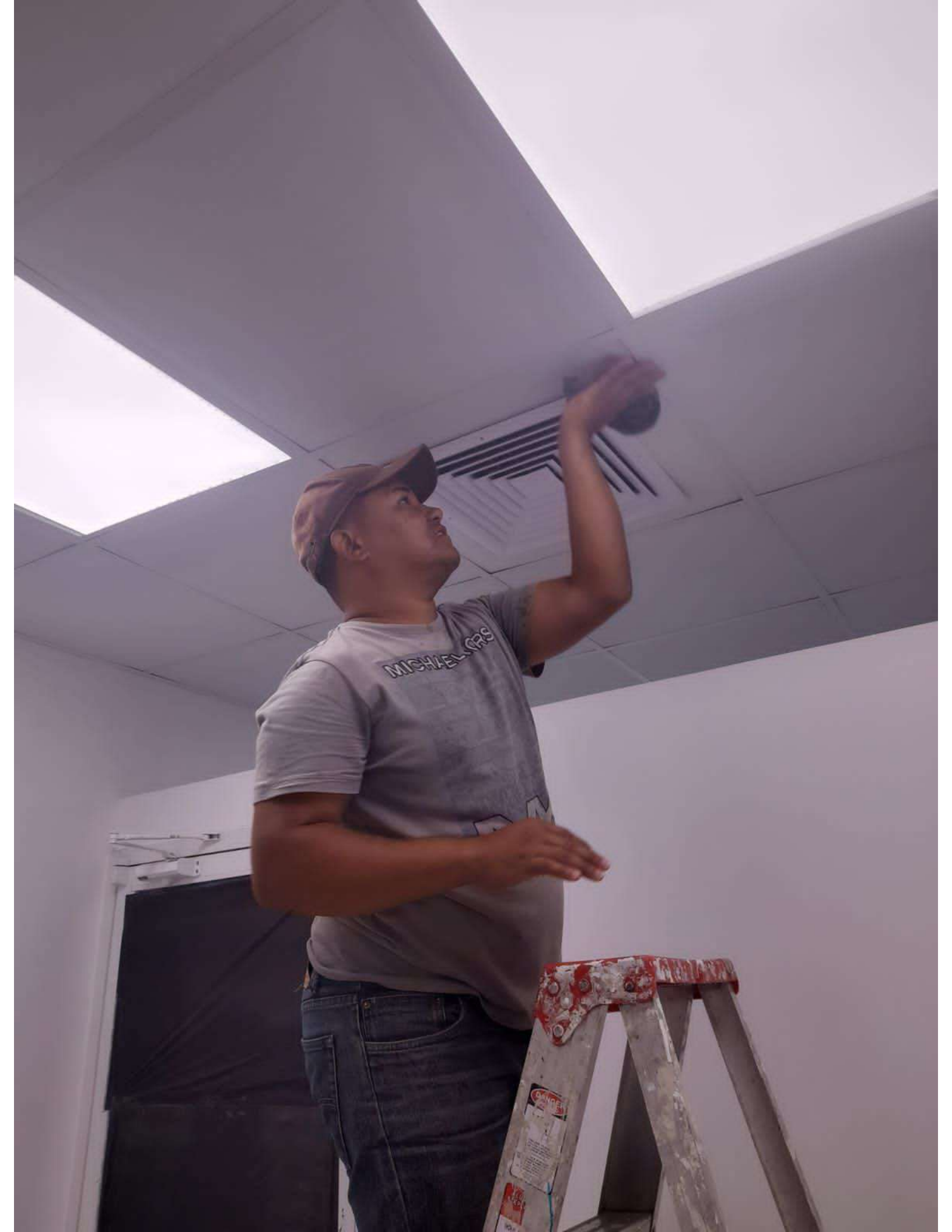






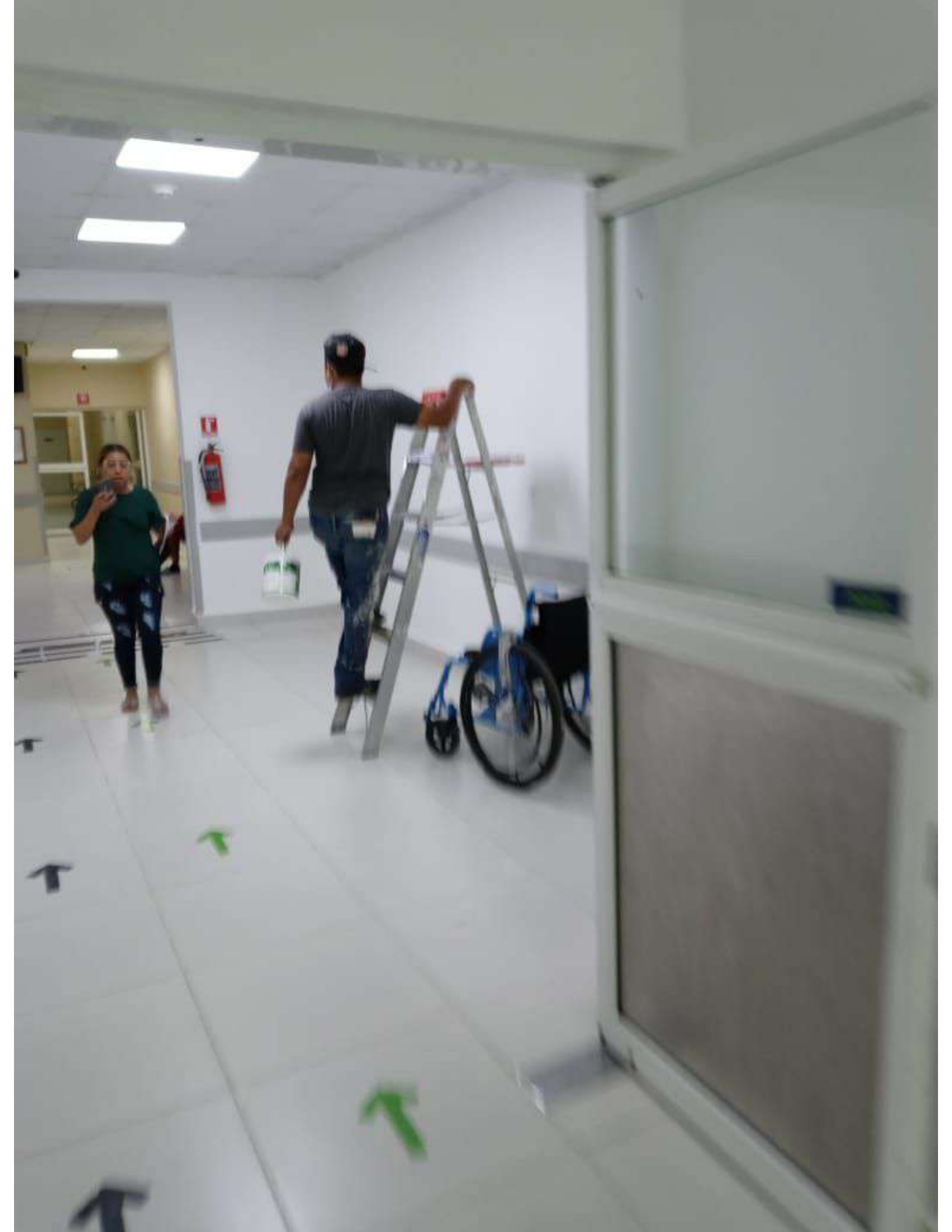






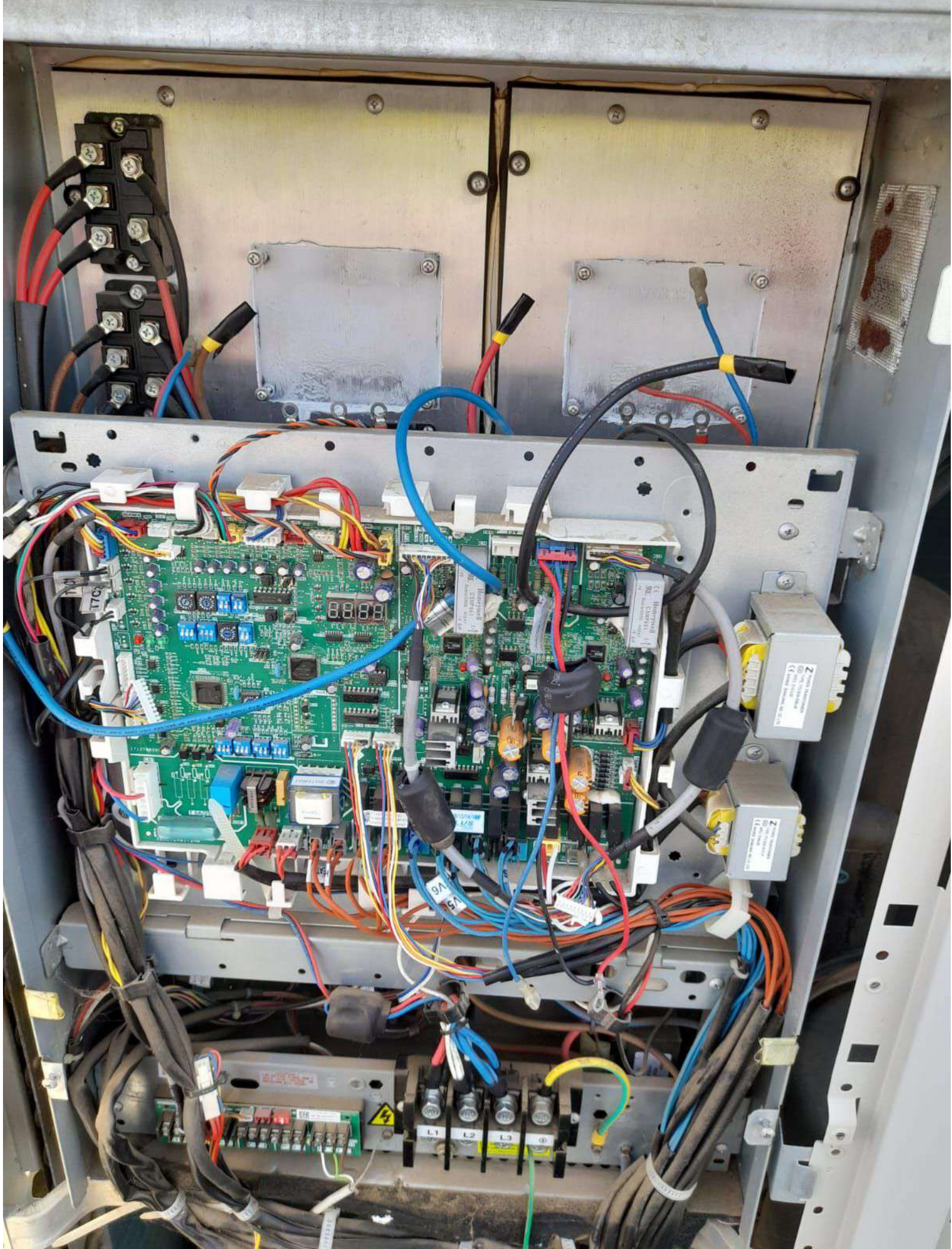














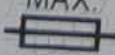









DC INVERTER V4 PLUS-S SERIES
AIR CONDITIONER OUTDOOR UNIT

MODEL	MDV-400(14)W/D2DN1(B)	
COOLING CAPACITY	40kW	
HEATING CAPACITY	45kW	
POWER SOURCE	220V 3~ 60Hz	
RATED CURRENT	MAX. 	54.4A/60A
NET WEIGHT	285kg	
REFRIGERANT	R410A / 13000g	
PS	HIGH	4.4MPa
	LOW	2.6MPa
OUTDOOR RESISTANCE CLASS		IP 24
		



HITACHI

INVERTER REFRIGERATING COMPRESSOR

变频涡旋压缩机

MODEL
型号

E655DHD-65A2YG

REFRIGERANT
制冷剂

R410A

POWER SOURCE
电源

=== 65-200 V
40-200 Hz

INPUT
输入功率

9000 W

OIL CHARGE
充油量

0.5 L

DATE
日期

170522 C

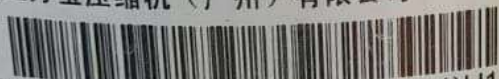
MFG. NO.
序号

H145914

Johnson Controls-Hitachi Wanbao Compressor (Guangzhou) Co., Ltd.
江森自控日立万宝压缩机（广州）有限公司



MADE IN CHINA



(01)0693476960E6G2(10)170522C(21)H145914



警告

防止触电！
在维修前请关闭电源，并请切实接好地线，以防触电。



WARNING

Turn power OFF before servicing.
Use this compressor on a grounded system only.



禁止

禁止充入！
勿将易燃易爆气体充入压缩机内。



AND-NOT

DO NOT put flammable or explosive gas into the compressor.







Entrega
de
Servicios Púb.
Empresario
Consulta







